

# Product Specifications



## Tunnel Light

100W Tunnel Light  
AJM-MD-100(TN)

### FEATURES

- Flexible, modular design.
- Multiple choice of optical lenses.
- Advanced, vortex air flow thermal management.
- Easy, low cost maintenance and repair.

### TYPICAL APPLICATIONS

- Suitable for Tunnels

### SPECIFICATIONS

#### PERFORMANCE

LED Chip	CREE XT-E
Lumen Output (IES)	9,199 lm
Power Consumption	101 W
Efficacy (IES)	91 lm/W
Beam Angle	85/135°
Color Temperature	4500~5500K (2500~5500K Optional)
CRI	≥70
Lumen Maintenance	L70>150,000 hours (Calculated Using TM-21 Calculator)
Input Voltage	100-277 VAC, Dimming Compatible
Power Factor	0.95 minimum
Surge Protection	Per IEC 61000-4-5
EMI	EMC Per EN 55015

#### ENVIRONMENTAL

IP Rating	IP65 (IP67 Optional)
Operating Temperature	-30 to 55°C (-22 to 131°F)
Humidity	15% to 90% RH

#### PHYSICAL

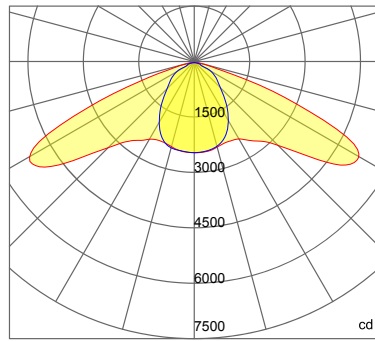
Dimensions (L×W×H)	400×400×180 mm (15.7×15.7×7.1 in)
Weight	7.4 kg (16.3 lbs)
Mounting Options	Universal Hanging Bracket, Surface Mount
Fixture Material	Aluminum Alloy

#### WARRANTY

5 Years

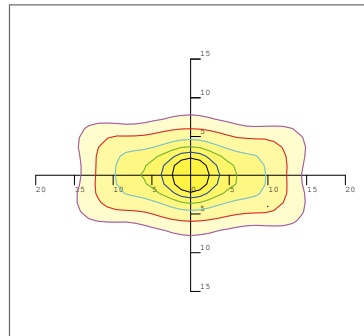
Photometrics

85/135 DEGREE LENS (Clear/Frosted)



— 0.0~180.0  
 — 90.0~270.0

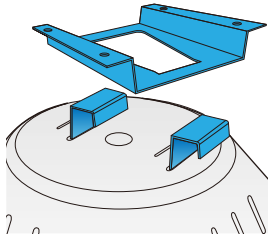
Beam Angle (50% max)	85x135 DEG
Field Angle (10%)	130x150 DEG
Luminous Flux (IES)	9,199 lm
Light Efficacy (IES)	91 lm/W
NEMA Type	7H x 7V
BUG Rating	B3-U2-G3
UGR	16/29
IES Classification	Type II
Cutoff Classification	Semi-Cutoff



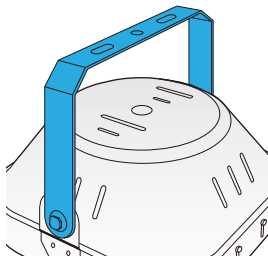
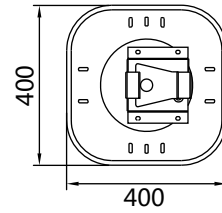
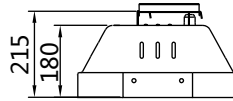
Mounting Hight 6m, 0 Tilt,  
 50LUX-5LUX

Illumination-85/135 Degree Beaming Angle		
Height	Rectangular Light Spot	LUX
5m	9x24m	82LUX
6m	11x29m	60LUX
7m	13x34m	45LUX
8m	14x39m	35LUX
9m	15x43m	28LUX

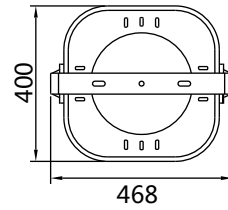
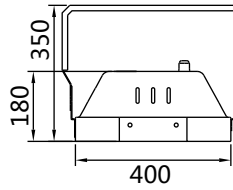
## Mounting Options



### Surface Mount



### Universal Hanging Bracket



## Ordering Information

